

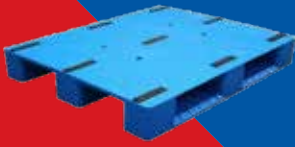
**LIGHT SPEED**

**LS**

**لايت سبيد**

Trading LLC

للتجارة ذ م م



**PLASTIC PALLETS**



**HOSPITALITY &  
HEALTH CARE SHOES**



**SECURITY BAGS**



**INDOOR/OUTDOOR  
FLAGS**



**GIFTS & PREMIUM**

# COMPANY PROFILE

**"PROFESSIONALS  
@  
WORK"**



[www.lightspeedtc.com](http://www.lightspeedtc.com)



[sales@lightspeedtc.com](mailto:sales@lightspeedtc.com)

Tel: +974 4418 8282 / +974 5995 8282 Fax: +974 4418 8383

## INTRODUCTION

Light Speed Trading & Contracting is a newly established entity in trading for all kinds of supply of plastic pallets, tamper evident plastic bags, safety shoes, executive & workmen shoes.

Previously we were engaged in the mentioned line of business from 1999 through our sister concern M/s. Gulf Neon.

We are venturing into the market with a different name in order to expand our line of business to cater to different sectors of the market.

## OBJECTIVE

We intend to be your one - stop call for all your business needs.

## VISION

"To be the company of first choice as the reliable and total solution provider for all your business needs"

## MISSION

"To establish a lasting relationship with our clients, by going beyond their expectations of quality and to gain their trust through exceptional service & most reasonable prices.

## VALUE STATEMENT

### **Customer Satisfaction:**

Ensure that the commitments to customers are 100% complied without any deviations

### **Quality In Production:**

Liaise with suppliers to maintain 100% quality in items at all times

### **Delivery Of Services:**

Timely completion & delivery on the committed items



## MANAGEMENT EXPERIENCE & STRENGTH

M/s.Light Speed Trading Co. is managed by experienced well connected leaders who are in Qatar from more than 15 years, having witnessed Qatar progress from a small market to a huge market. Having such deep local knowledge gives an advantage to understand the psyche of the local community and their requirements

## QUALITY, PRICE & DELIVERY ASSURANCE

M/s.Light Speed Trading Co. puts a lot of efforts to ensure there is never a compromise on the quality of products we deliver and at the same time we manage to provide best competitive prices to our customers. Our aim is not to earn big profits in first business but to earn your continuous business whereby we base our profits on your long term business with us.

We always make sure to meet your deadlines and challenge ourselves to get your desired product in the shortest possible time. We completely understand and respect the significance of our client's occasions, events and make efforts to deliver our item on time at their designated location.

## LINE OF BUSINESS

### A list of few items we deal in:

- Plastic Pallets, Dustbins, Trash Bins, Medical Disposable Bins
- Tamer Evident Plastics
- Safety Shoes
- Executive and Workmen Shoes

## LIST OF CLIENTS WE HAVE SERVED

### A few of the clients we have served for various products:

- Qatar Petroleum (QP)
- Ministry Of Interior (MOI)
- College Of North Atlantic (CNAQ)
- Qatar Armed Forces (QAF)



# COMPANY DETAILS

**Company Name:** M/s. Light Speed Trading Co. W.L.L

**Established:** 2021

**CR No:** 154925

## Contacts:

**Phone** (+974-) 4418 8282

**Mobile** (+974) 5995 8282

**Fax** (+974-) 4418 8383

## Email sales inquiries:

[sales@lightspeedtc.com](mailto:sales@lightspeedtc.com)

## Accounts inquiries:

[accounts@lightspeedtc.com](mailto:accounts@lightspeedtc.com)

**Website:** [www.lightspeedtc.com](http://www.lightspeedtc.com)

  [lightspeedtc](#)

## Business Scope:

Trading in Plastic Storage, Security Plastic Bags, Shoes, Gift Items.



# TABLE OF CONTENTS

**01-02**

**INTRODUCTION**

**03**

**COMPANY DETAILS**

**04**

**TABLE OF CONTENTS**

**05**

**PRODUCTS - PLASTIC PALLETS**

**06**

**PRODUCT - INDOOR /  
OUTDOOR WASTE BINS & CRATES**

**07-08**

**PRODUCT - HOSPITALITY &  
HEALTH CARE SHOES**

**09**

**PRODUCT - PLASTIC BAGS**

**10**

**PRODUCT - SAFETY WEAR**

**11-12**

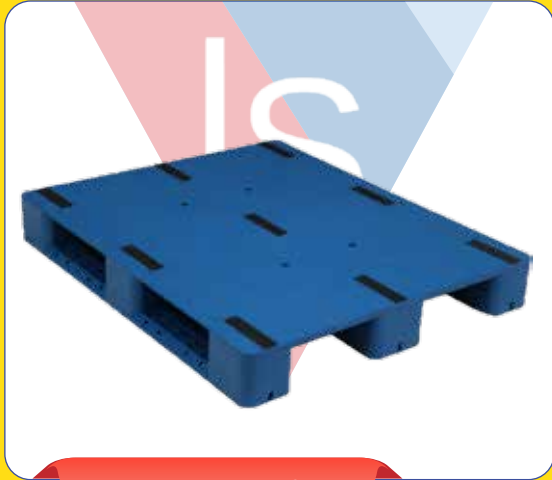
**PRODUCT - GIFTS & PREMIUM**

**13**

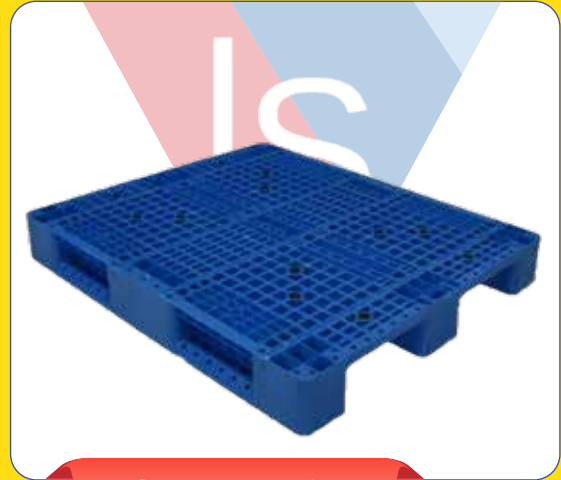
**PRODUCT - INDOOR  
& OUTDOOR ADVERTISING**



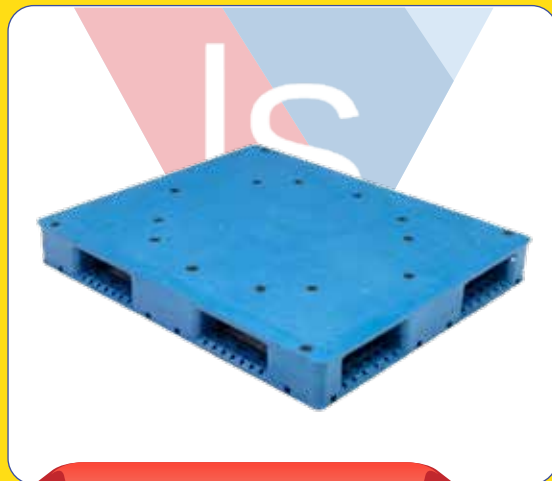
# PRODUCT - PLASTIC PALLETS



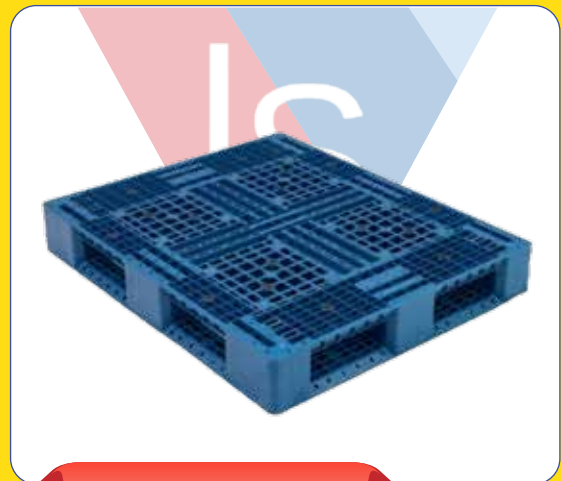
FLAT PALLET 3R



GRID PALLET-3R



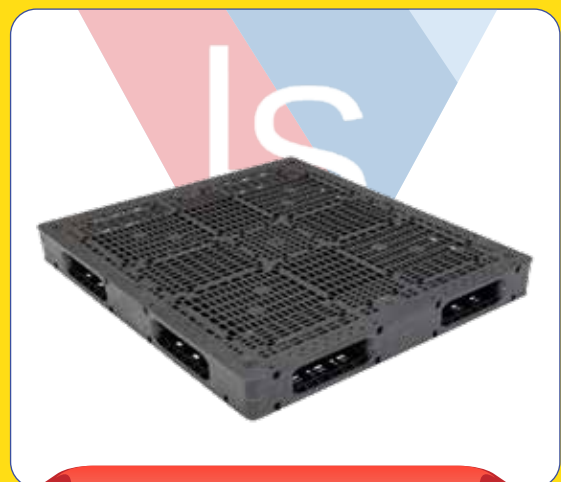
FLAT PALLET 6R



GRID PALLET-6R



FLAT PALLET REVERSIBLE



GRID PALLET REVERSIBLE



# PRODUCT - INDOOR / OUTDOOR WASTE BINS & CRATES



**CONTAINERS-COLLAPSIBLE-  
HEAVY DUTY**



**CONTAINERS-SOLID-  
NORMAL DUTY**



**SPILL PALETS**



**PLASTIC WASTE BINS**



**PLASTIC CRATES**





# PRODUCT - HOSPITALITY & HEALTH CARE SHOES



## CHEF SHOES



## HOSPITALITY SHOES





# PRODUCT - HOSPITALITY & HEALTH CARE SHOES



## SAFETY SHOES



## MEDICAL SHOES



# PRODUCT - PLASTIC SECURITY BAGS



TAMPER EVIDENT SECURITY BAGS



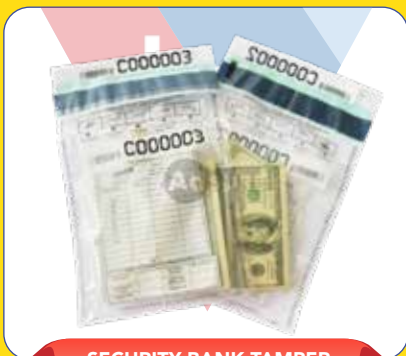
RFID SECURITY BAGS



CUSTOM POLY BUBBLE MAILERS



CUSTOM WASTE BAGS



SECURITY BANK TAMPER EVIDENT DEPOSIT BAGS



CLEAR COIN DEPOSIT BAGS



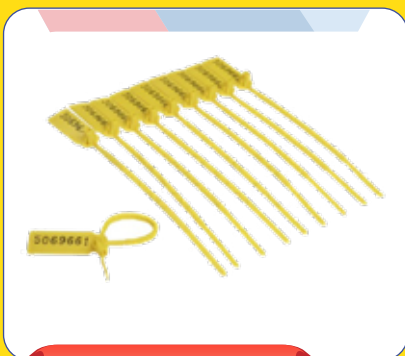
SPECIMEN BAG WITH DUAL POCKET



UN3373 SPECIMEN BAG



CUSTOM POLY BUBBLE MAILERS



PLASTIC SECURITY SEAL



TOTAL TRANSFER SECURITY LABELS



RFID TYVEK WRISTBANDS



## PRODUCT - SAFETY WEAR



TRAFFIC JACKET



POLICE JACKET



DEA JACKET



DISPOSABLE APRON



WINTER JACKET



DISPOSABLE COAT & COVER ALL

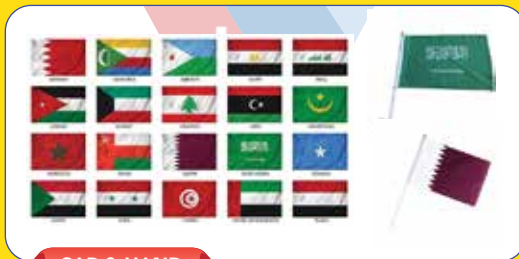


DISPOSABLE PPE ITEMS

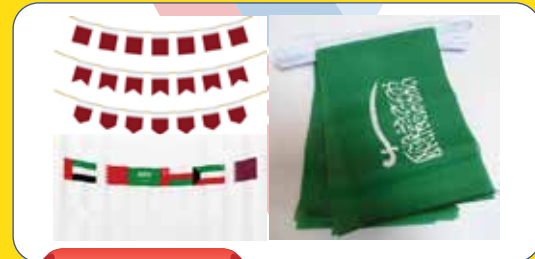


FIRST AID KIT

## PRODUCT - OUTDOOR & INDOOR FLAGS



CAR & HAND FLAGS



FLAG STRINGS

YOU CAN CHOOSE FROM A VARIETY OF ACCESSORIES

**DIFFERENT PRINTING METHOD:**  
 \*Single side printing: Flag (the back side is mirror image).  
 Only one layer.

FRONT      BACK

**DIFFERENT PRINTING METHOD:**  
 \*Double side printing: Flag (both sides read correct).  
 Total 2 layers.

FRONT      BACK

TABLE FLAG, FLAGS & BANNERS  
OUTDOOR AND INDOOR

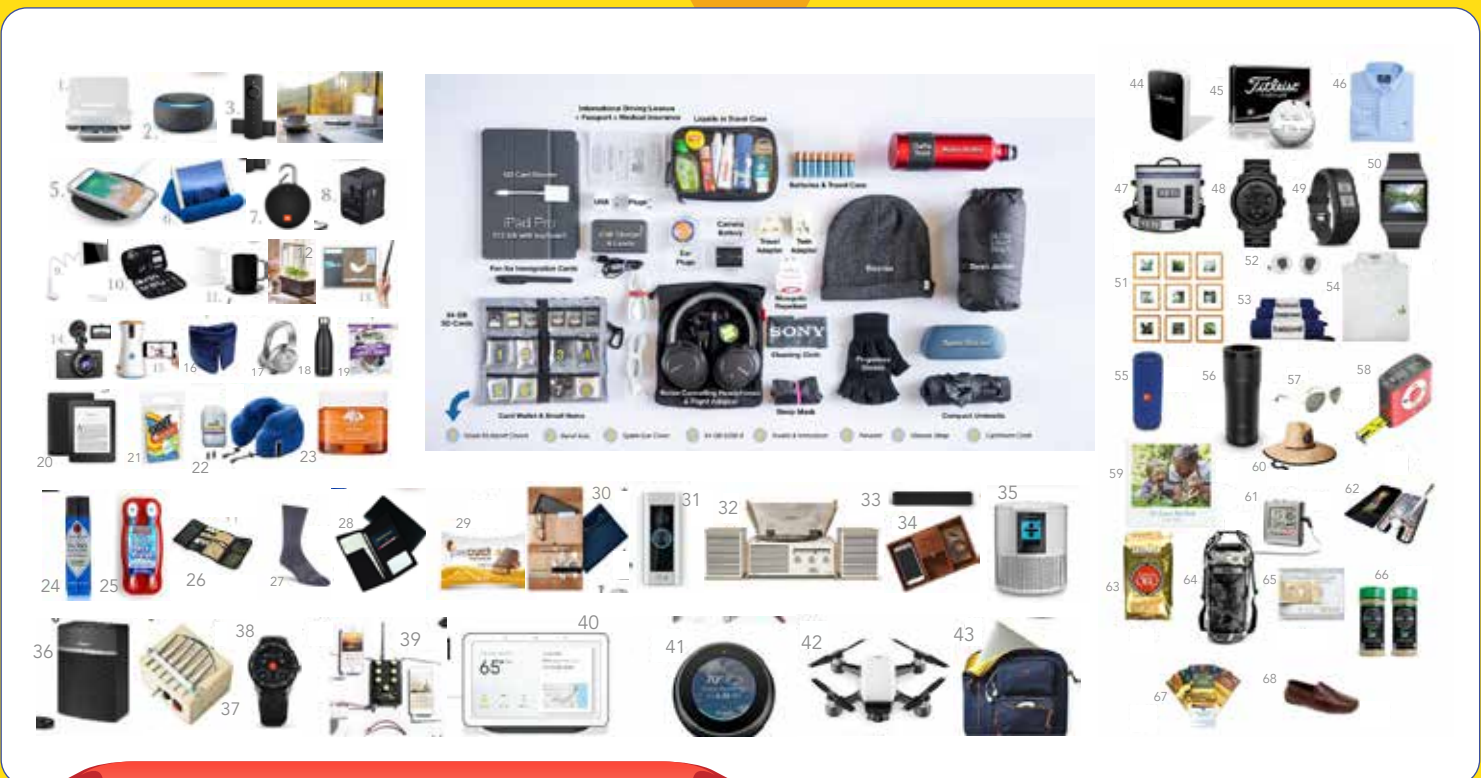




# PRODUCT - GIFTS & PREMIUMS



**ECO FRIENDLY GIFTS AND , NONWOVEN SUBLIMATION FULL COLOUR PRINTED BAGS**



**TRAVEL AND TECHNOLOGY GIFTS**



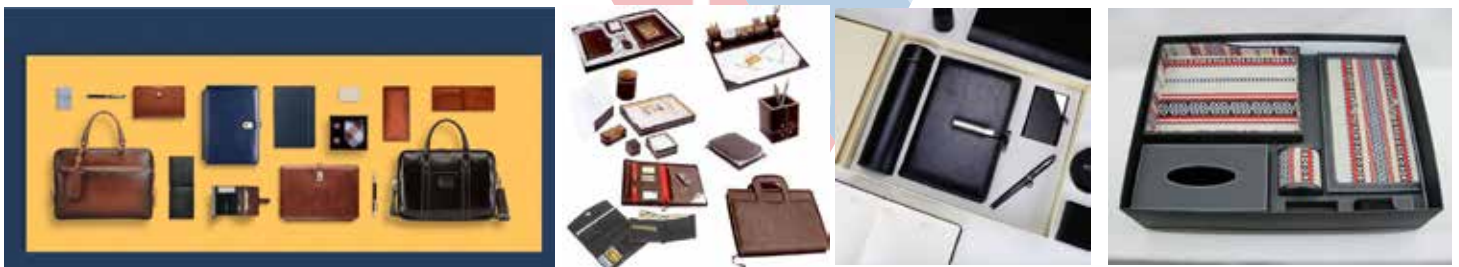
# PRODUCT - GIFTS & PREMIUMS



CRYSTAL AND METAL TROPHIES AND SOUVENIRS



CUSTOMIZED DIE - CAST PINS IN METAL AND PVC



LEATHER CORPORATE GIFT ITEMS





# PRODUCT - INDOOR & OUTDOOR ADVERTISING



OUTDOOR - INDOOR CUSTOMIZED ADVERTISING HUGE INFLABLES , MASCOTS , AND CUSTOMS



[www.lightspeedtc.com](http://www.lightspeedtc.com)



[sales@lightspeedtc.com](mailto:sales@lightspeedtc.com)



**"PROFESSIONALS  
@  
WORK"**



The logo consists of the letters 'LS' in a white, bold, sans-serif font. The 'L' is on the left and the 'S' is on the right. They are centered within a large, downward-pointing triangle. The triangle is divided into three sections: a red section on the left, a blue section on the right, and a smaller light blue section at the top right corner. The background of the entire page is yellow, with a diagonal split into a blue section at the bottom left.

**LS**

**"PROFESSIONALS  
@  
WORK"**

**UNLIMITED TRADING**

**Tel: +974 4418 8282 / +974 5995 8282 Fax: +974 4418 8383**



**[www.lightspeedtc.com](http://www.lightspeedtc.com)**



**[sales@lightspeedtc.com](mailto:sales@lightspeedtc.com)**